

LWJ(HX)白光样品

1. 测试坐标原点 (虚拟焦点 $x=0.229\text{mm}$, $y=-0.025\text{mm}$, $z=-0.086\text{mm}$)

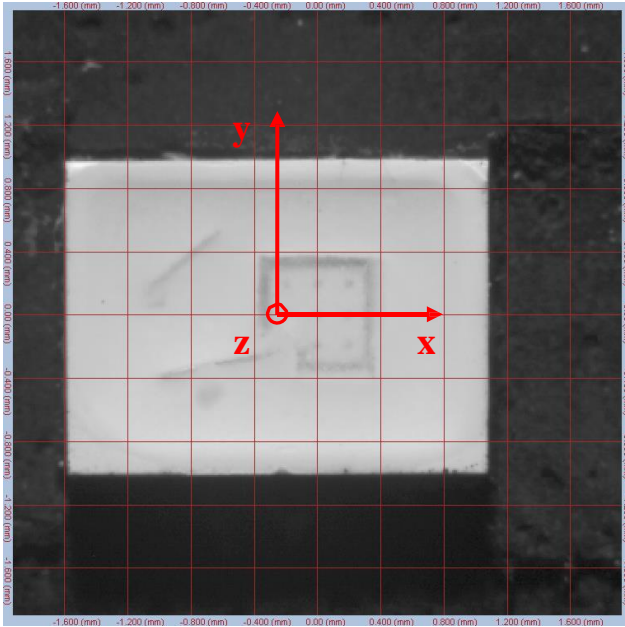


图 1 $I=0^\circ$, $A=0^\circ$

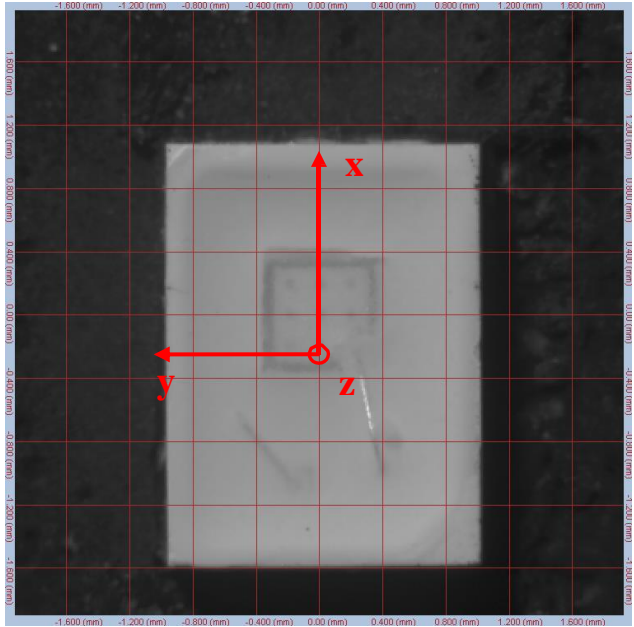


图 2 $I=0^\circ$, $A=90^\circ$

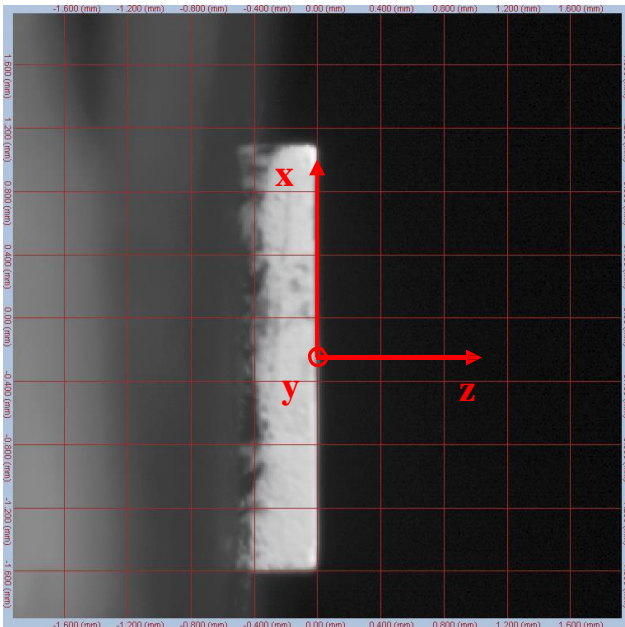


图 3 $I=90^\circ$, $A=90^\circ$

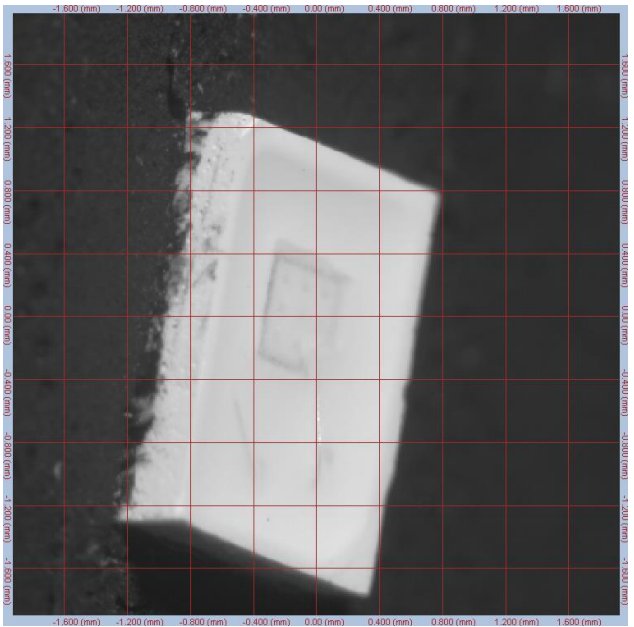


图 4 $I=50^\circ$, $A=75^\circ$